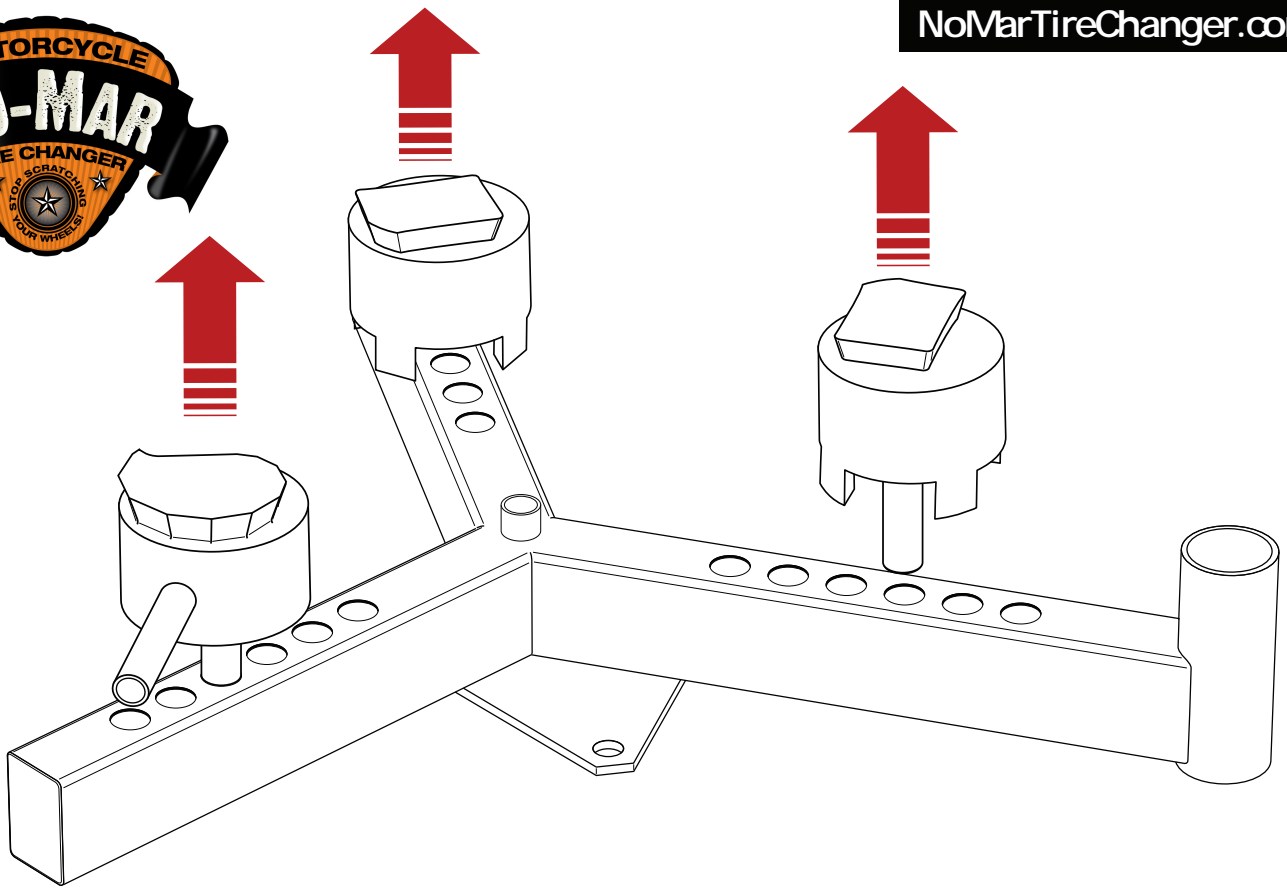


1



NoMarTireChanger.com



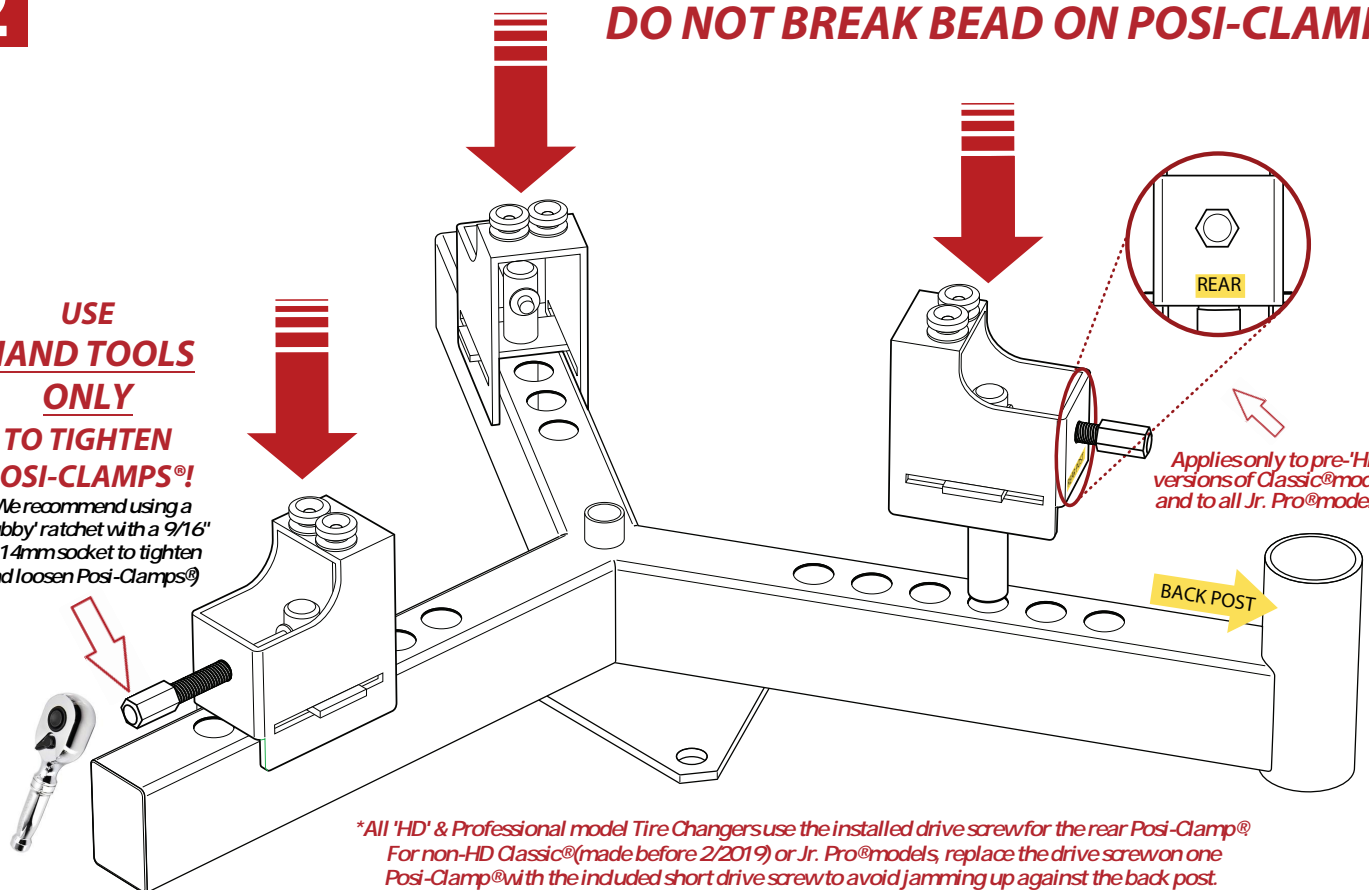
Remove Cam & Dog Blocks (if equipped) and replace with Posi-Clamps®. Note the rear post.

2

DO NOT BREAK BEAD ON POSI-CLAMPS®!

**USE
HAND TOOLS
ONLY
TO TIGHTEN
POSI-CLAMPS®!**

(We recommend using a 'Stubby' ratchet with a 9/16" or 14mm socket to tighten and loosen Posi-Clamps®)



*Applies only to pre-'HD' versions of Classic® models and to all Jr. Pro® models **

**All 'HD' & Professional model Tire Changers use the installed drive screw for the rear Posi-Clamp®
For non-HD Classic® (made before 2/2019) or Jr. Pro® models, replace the drive screw on one Posi-Clamp® with the included short drive screw to avoid jamming up against the back post.
Apply included 'REAR' label as shown to easily identify the rear Posi-Clamp®*