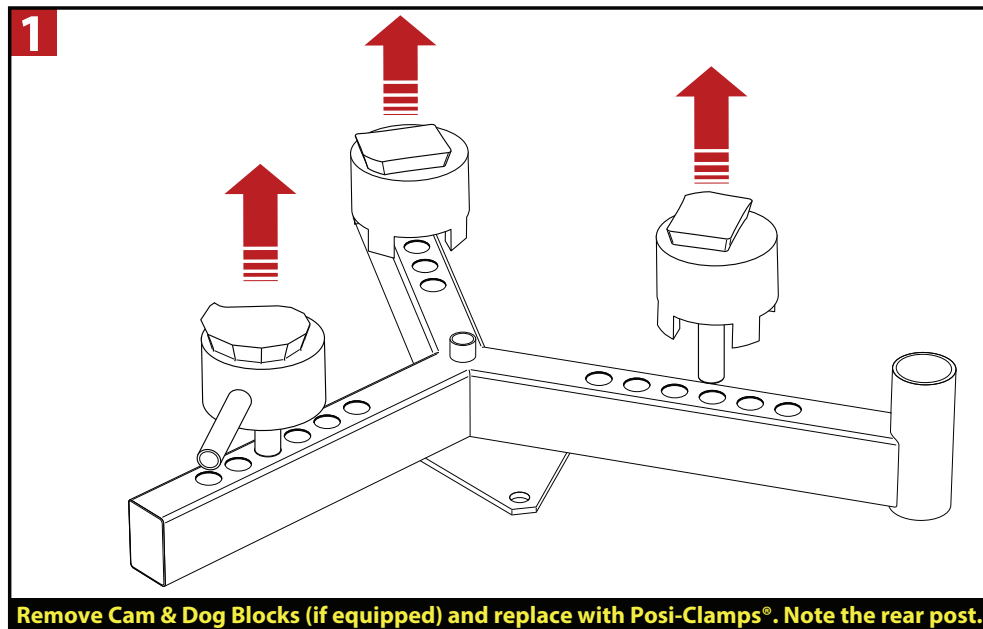




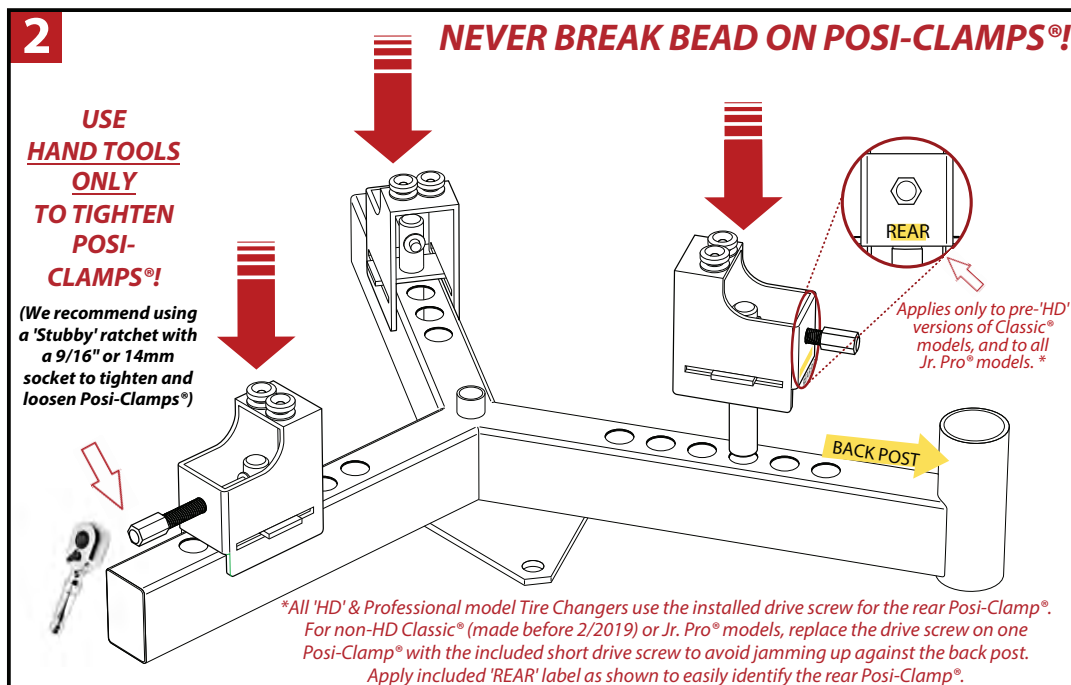
Posi-Clamp® Wheel Clamping System - Use and Maintenance

NoMarTireChanger.com



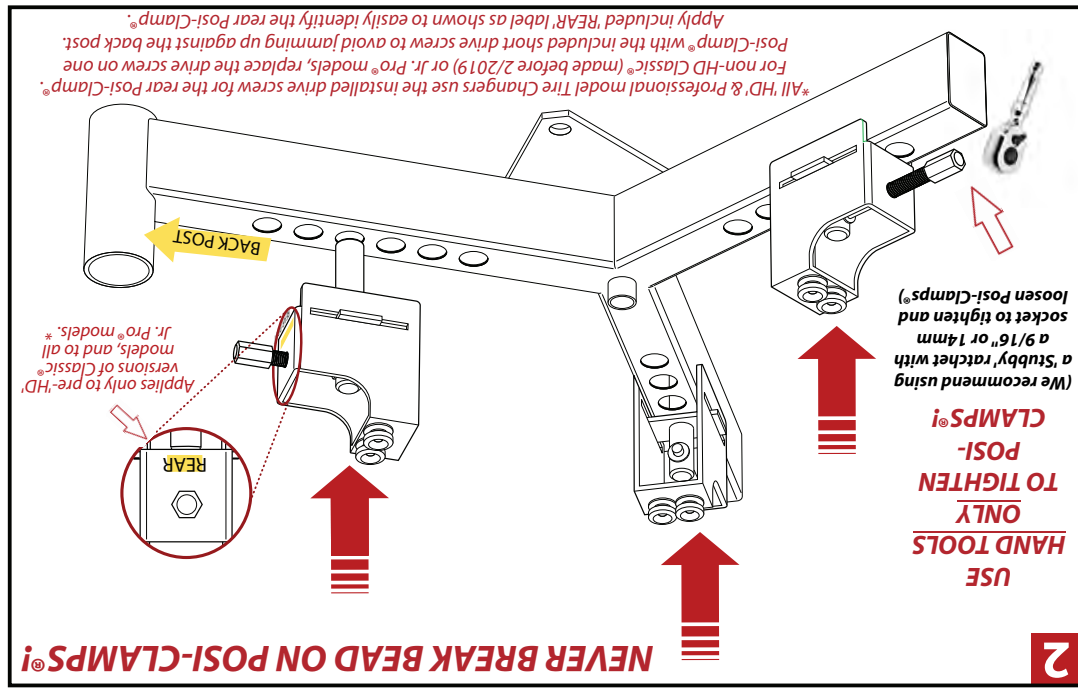
Notes:

1. Included Tall Spools are designed for BMW® -GS and Harley-Davidson® cast wheels, and may also help clamp automotive wheels with thicker edge profiles. **All other wheels should use pre-installed Standard Spools.**
2. Posi-Clamp® drive screw threads come pre-lubricated with high temperature bearing grease from the factory. Threads should be checked periodically and re-lubricated with high temperature bearing grease as needed to ensure proper operation.
3. Never use power tools (cordless or otherwise) to tighten/loosen Posi-Clamps®. Use hand tools only! Stripped threads are not covered under any warranty.

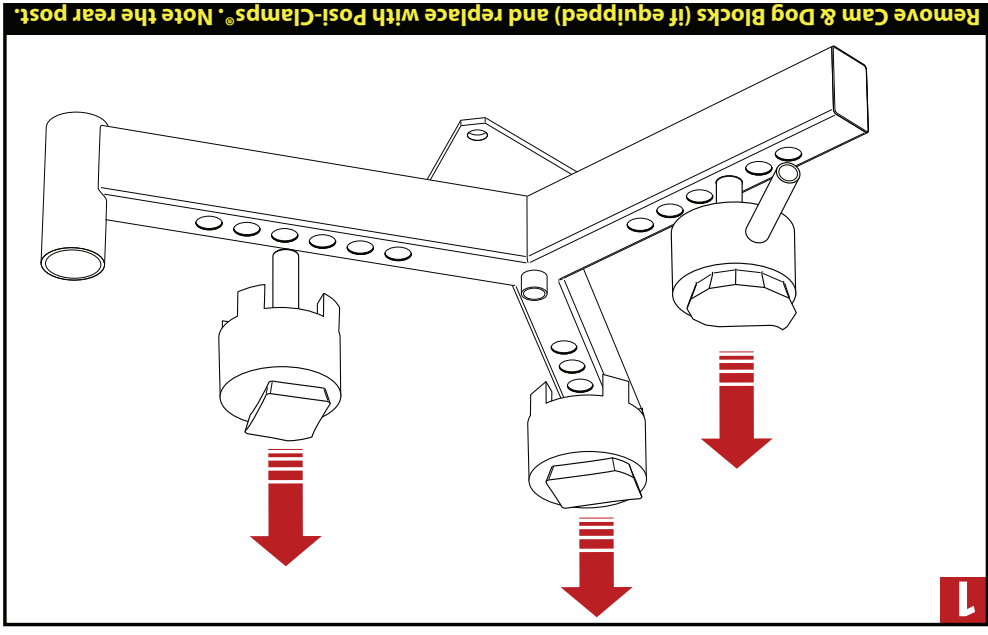


Replacement Parts available at NoMarTireChanger.com





1. Included Tall Spools are designed for BMW®-GS and Harley-Davidson® cast wheels, and may also help clamp automotive wheels with thicker edge profiles. **All other wheels should use pre-installed Standard Spools.**
2. Posi-Clamp® drive screw threads come pre-lubricated with high temperature bearing grease from the factory. Threads should be checked periodically and re-lubricated with high temperature bearing grease as needed to ensure proper operation.
3. Never use power tools (cordless or otherwise) to tighten/loosen Posi-Clamps®. Use hand tools only! Stripped threads are not covered under any warranty.



Posi-Clamp® Wheel Clamping System - Use and Maintenance

NoMarTireChanger.com



Notes: